



color chart

Version 2017/0001

PEKA CHEMIE
Industrial Company



PEKA CHEMIE
INDUSTRIAL COMPANY

Smooth



☀ 5077 AP18AX



🏠 5012 AH17ZX



🏠 5019 AH17ZX



🏠 5005 AE18AX



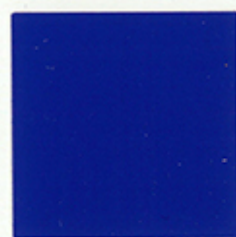
🏠 6027 GH18AX



☀ 5070 AP18AX



☀ 5010 AP18AX



☀ 5002 AP18AX



☀ 5018 AP18EX



☀ 5018 AP18BX



☀ 6029 GP18AX



☀ 6009 GP18AX



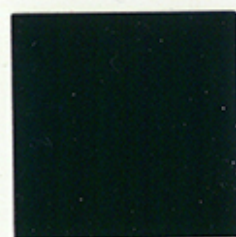
☀ 6074 GP18CX



☀ 6018 GP18AX



☀ 6016 GP18AX



☀ 6005 GP18AX



🏠 6019 GH18AX



☀ 6021 GP18AX



🏠 6011 GH18AX



🏠 6013 GH14CX

☀ Exterior

🏠 Interior

Smooth



☀ 9016 WP18DXT



🏠 9003 WH18MX



🏠 9002 WH18AX



☀ 7035 KP18AX



☀ 7047 KP18BX



🏠 7004 KH18AX



☀ 7040 KP18AX



☀ 7037 KP18AX



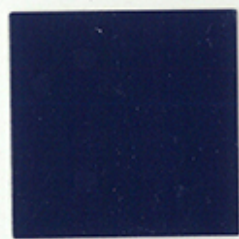
☀ 7032 KP18BXT



🏠 7000 KH18AX



🏠 7031 KH18AX



🏠 7016 KH18AX



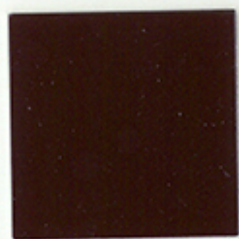
🏠 1002 CH11BX



☀ 1011 CP18FX



☀ 8003 NP17BX



☀ 8014 NP18AX



☀ 1002 CP18BX



☀ 8002 NP18AX



☀ 8007 NP18AX



☀ 7021 KP13AX

Smooth



✱ 1016 CP18AX



✱ 1018 CP18AX



✱ 1021 CP18AX



✱ 1003 CP18AX



✱ 1023 CP138X



✱ 1028 CP18AX



✱ 2011 OH18BX



✱ 2009 OP18AX



✱ 2000 OP18AX



✱ 2008 OP13CX



✱ 2002 OP18BX



✱ 3020 RP18DX



✱ 8023 NP18AX



✱ 3002 RP18AX



✱ 3011 RD16QX



✱ 3005 RP18AX



✱ 2013 OP18BX



✱ 8015 NP18AX



✱ 8017 NP18AX



✱ 9005 BH14CX

Smooth



🏠 9001 WH18AX



☀️ 1013 CP18AX



☀️ 1015 CP18AX



☀️ 1001 CP18BX



🏠 3015 RH18BX



☀️ 4003 PP18AX



☀️ 4006 PP18AX



☀️ 4008 PP18BX



☀️ 4005 PP18BX



🏠 5073 AH18AX



🏠 4070 PH18AX



☀️ 9005 BP18AX



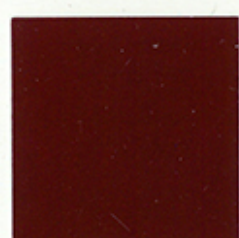
🏠 4060 VH18AX



🏠 3060 VH18CX



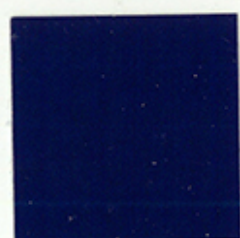
🏠 3060 VH18AX



☀️ 3060 VP18AX



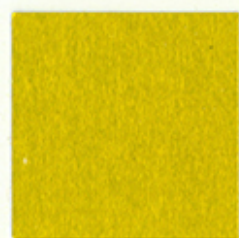
🏠 5061 VH18BX



🏠 5060 VH18AX

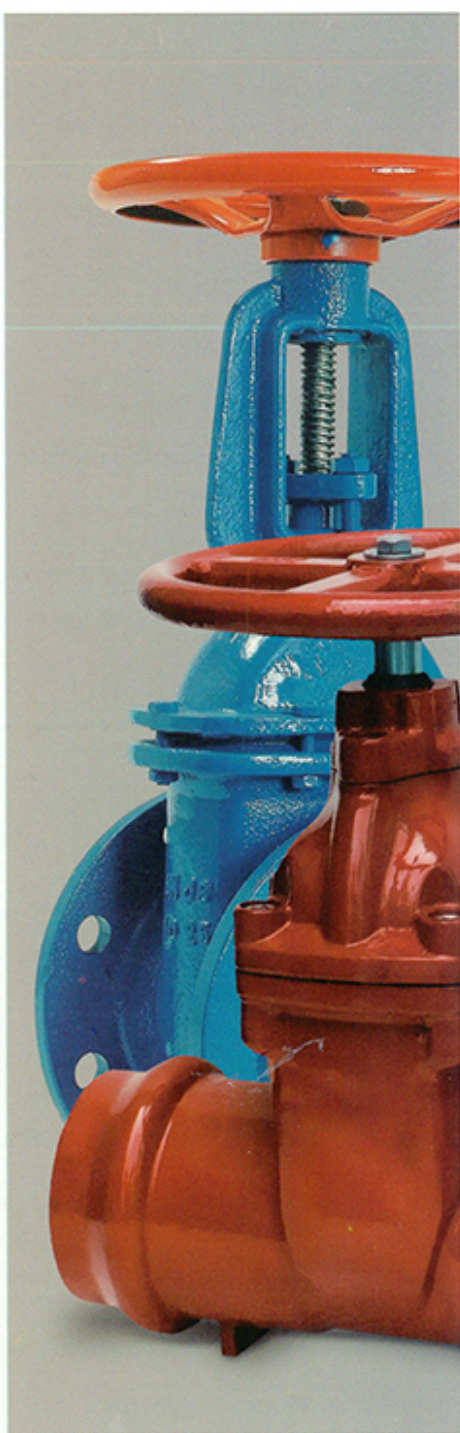
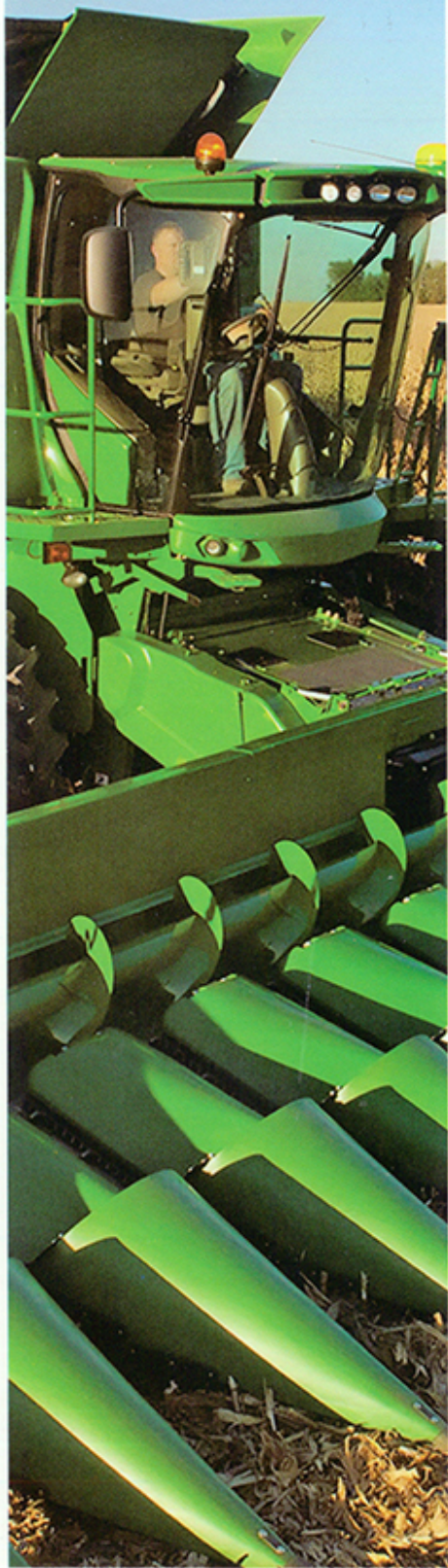


🏠 6060 VH18AX



🏠 1060 VH18AX

PEKA CHEMIE
INDUSTRIAL COMPANY



Peka chemie's powders are available in different colors. We recommend using them for different fields such as Architectural, Urban, Industrial, Exterior and also Interior usages.

These sample plates should be used as a guide, however it doesn't mean your application of these powders is guaranteed and comparable with the samples due to differences in production procedure and their pigments.

Powders with QUALICOAT approval are also available.

Epoxy powders, have potable water certificates.

FBE(fusion bonded epoxy) powders because of their thickness don't exist in this color chart but it's also available. For further information please do not hesitate to contact us.



PEKA CHEMIE
INDUSTRIAL COMPANY

www.pekachemie.com



TZW
TU/ste Wasser



Bodycote